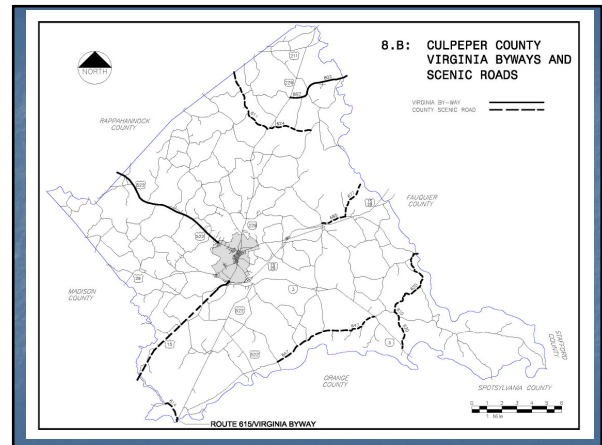
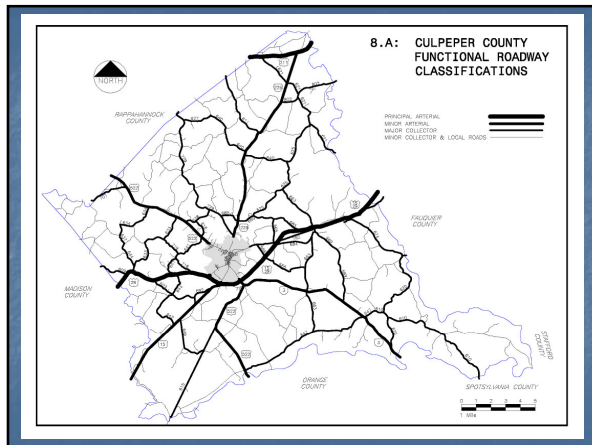


# CULPEPER COUNTY TRANSPORTATION PLANS

RRRC RURAL TRANSPORTATION  
TECHNICAL COMMITTEE

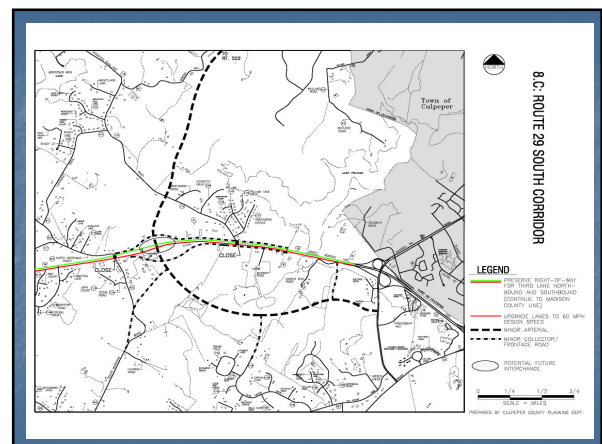
## COMPREHENSIVE PLAN 2005

- Functional Classification Map
- Scenic Roads and Virginia Byways
- Area Plans:
  - 29 South Corridor
  - 15/29 Business Corridor
  - Town/County Loop Road
  - Airport
- Bike Route Plan



### Route 29 South Corridor

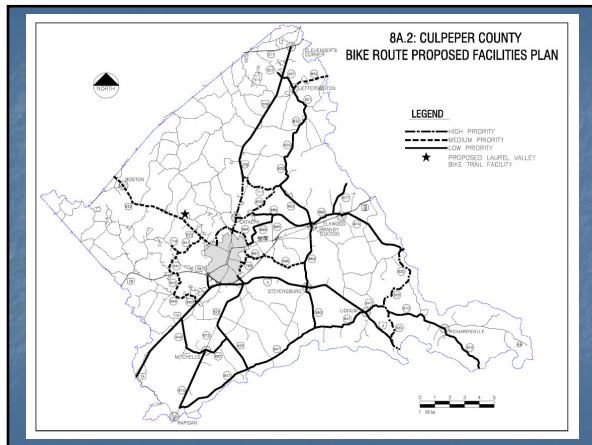
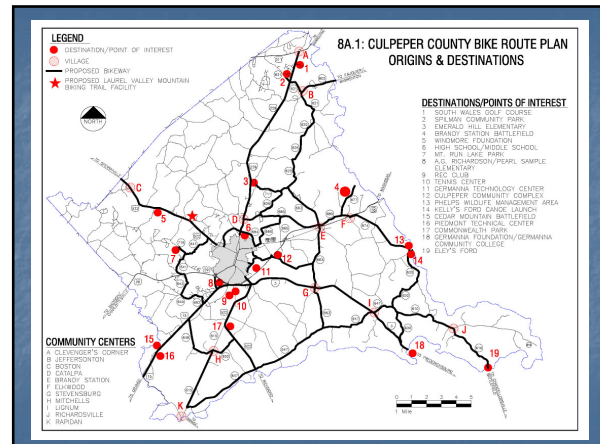
- This corridor is NOT Limited Access
- Parallel road through major residential developments
- Frontage roads
- New interchange between Routes 718 and 643 (portion of R-O-W in place)





## Bike Route Plan

- Identifies origins and destinations
- Establishes priorities
- Provides Facilities data
- Coordinated with the Town of Culpeper



## Six-Year Improvement Program Priorities

- Route 3 – Four lane
- Route 15/29 Bypass – Route 666 Interchange
- Route 15/29 Business – Four lane
- Route 229 – Four lane

